

**I**ntegrity  
**B**uilding  
**S**ystems, Inc.

*We build upon our name*

---

## *Integra Cape Series*



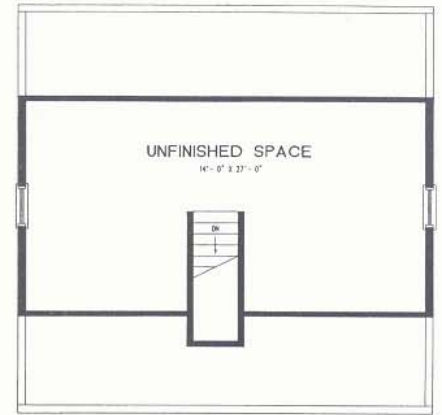
## Cape May I

27'4" x 28'

765 Sq. Ft. • 1 bedroom / 1 bath



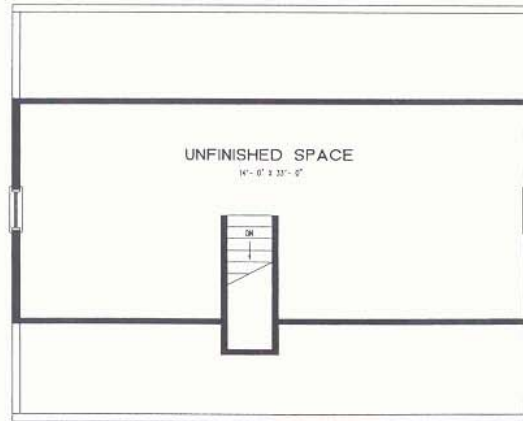
FIRST FLOOR



SECOND FLOOR



FIRST FLOOR



SECOND FLOOR

## Cape May II

27'4" x 34'

929 Sq. Ft.  
2 bedrooms / 1 bath

## Cape May III

27'4"/25' x 50'

1324 Sq. Ft.  
1 bedroom / 1 bath

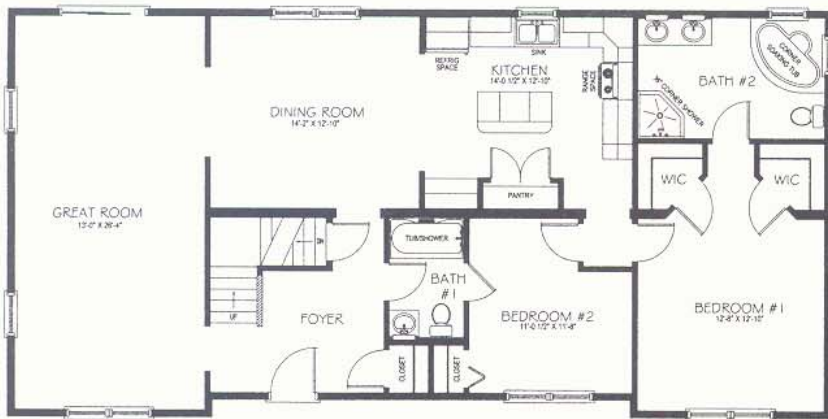


## Cape May V

27'4"/25' x 50'

1338 Sq. Ft. • 1 bedroom / 1 1/2 baths





## Cape May VI

27'4"/26'4" x 56'

1531 Sq. Ft. • 2 bedrooms / 2 baths



## Cape May VII

27'4" x 52'

1421 Sq. Ft.

1 bedroom / 1 bath



## Cape May VIII

27'4"/24' x 62'

1608 Sq. Ft.

1 bedroom / 1 1/2 baths

## Cape May IV

29'6" x 42'

1239 Sq. Ft. • 2 bedrooms / 1 1/2 baths



## Villas I Cape Chalet

27'4" x 48'

1312 Sq. Ft.

2 bedrooms / 2 bath Chalet



## Villas II Cape Chalet

27'4" x 19' / 27'4" x 34' /  
27'4" x 19'

1977 Sq. Ft.

3 bedrooms / 2 baths



Local Dealer

**I**ntegrity  
**B**uilding  
**S**ystems, Inc.

2435 Houels Run Road • Milton, PA 17847  
Phone (570) 522-3600 • Fax (570) 522-0089

Visit our web site: [www.integritybuild.com](http://www.integritybuild.com)  
email: [sales@integritybuild.com](mailto:sales@integritybuild.com)

\*Dealers are not agents of Integrity Building Systems.

\*Some items shown in these photos are options and may not be included in standard floor plans.