

Integrity
Building
Systems, Inc.

We build upon our name

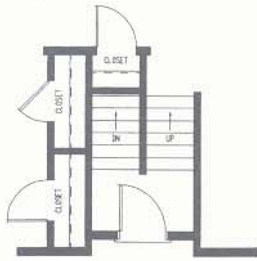
Heritage Series



Heritage I

25' x 36'

900 Sq. Ft. • 2 bedrooms / 1 bath



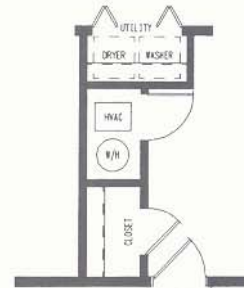
OPTIONAL SPLIT FOYER ENTRANCE



Heritage II (A)

25' x 40'

1000 Sq. Ft. • 2 bedrooms / 1 bath

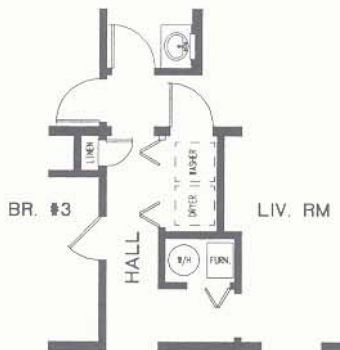


CRAWLSPACE OPTION

Heritage II (B)

25' x 40' / 12'6"

1312 Sq. Ft. • 3 bedrooms / 2 baths



CRAWLSPACE OPTION





Heritage III

25' x 44'
1100 Sq. Ft. • 3 bedrooms / 2 baths



CRAWLSPACE OPTION

Heritage IV

25' x 48'
1200 Sq. Ft. • 3 bedrooms / 2 baths



CRAWLSPACE OPTION



Heritage V

25' x 52'
1300 Sq. Ft. • 3 bedrooms / 2 baths



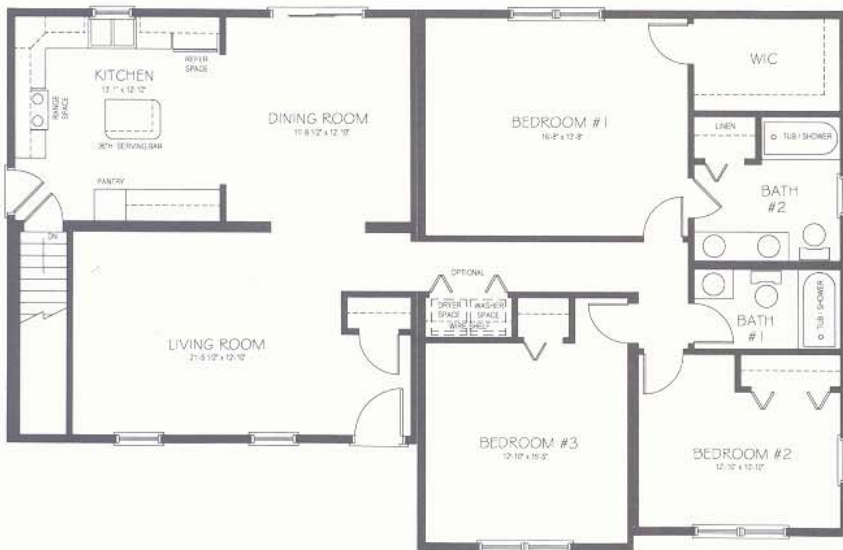
CRAWLSPACE OPTION

Heritage IX

27'4" x 44'

1203 Sq. Ft.

3 bedrooms / 2 baths



Heritage XI

27'4" x 26' / 27'4" x 33'/34'

1626 Sq. Ft.

3 bedrooms / 2 baths

Heritage XII

27'4" x 52'

1421 Sq. Ft.

3 bedrooms / 2 baths





Heritage XIV

27'4" x 44'
 1203 Sq. Ft. • 2 bedrooms / 2 baths

Heritage VI

25' x 36'
 900 Sq. Ft. • 2 bedrooms / 1 bath



OPTIONAL SHED DORMER FLOOR PLAN



Heritage VII

25' x 40'
 1000 Sq. Ft. • 2 bedrooms / 1 bath

Heritage X

27'4" x 44'
1203 Sq. Ft.
1 bedroom / 1 1/2 bath



First Floor



Second Floor

Heritage VIII

25' x 28'
1400 Sq. Ft.
3 bedrooms
2 1/2 baths

Heritage XV

27'4" x 40'
2187 Sq. Ft. • 3 bedrooms / 2 1/2 baths



First Floor



Second Floor

Heritage XVI

27'4" x 44'32"

2077 Sq. Ft. • 4 bedrooms / 2 1/2 baths



First Floor



Second Floor

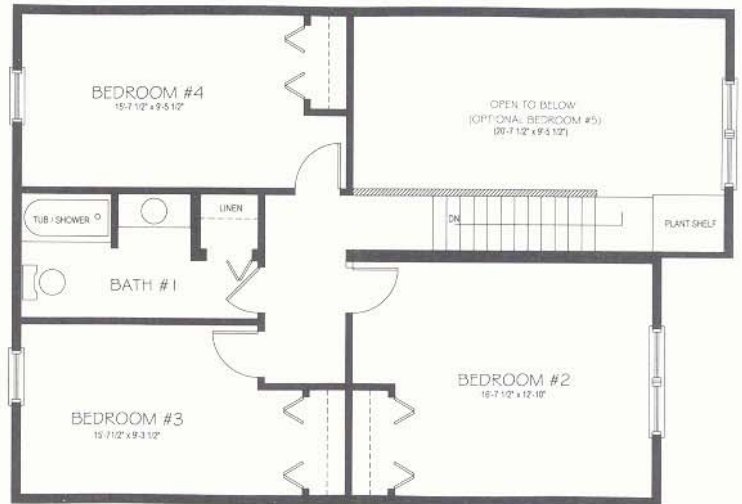
Heritage XVII

27'4" x 36'40"

2077 Sq. Ft. • 4 bedrooms / 2 1/2 baths



First Floor



Second Floor

Local Dealer

*Dealers are not agents of Integrity Building Systems.



2435 Housels Run Road • Milton, PA 17847
Phone (570) 522-3600 • Fax (570) 522-0089

Visit our web site: www.integritybuild.com
email: sales@integritybuild.com

**Some items shown in these photos are options and may not be included in standard floor plans.*